

MAARK

FURNITURE

The Complete Comfort



Message From The Managing Director



Mr. Krishna Chandra Verma
Managing Director



Maak Furniture Industries Pvt. Ltd. became a prominent name in its business segment, but like every entrepreneur sticks to their dream, I always wanted to push my company to more prosperous milestones. More than being a global player, I always perceived my company as a unit that could make a difference with its quality and competitively priced products.

The vision and ethos of the company is for continuous improvement with customer satisfaction a priority, and we are committed to maintaining and improving our processes and procedures.

Director's Message



Mr. Raj Dutt Verma
Director

We can say that the years we experienced in the past are significant years and it is clearly seen that we have intensively delivery our best performance to focus on customer satisfaction. On behalf of the Board of Directors, I would like to thank our valuable customers, reliable dealers and world-class suppliers.

The HERD is never HEARD ! Be unique.

MAAK
FURNITURE

The Complete Comfort





The Complete Comfort

About Us

We make your dreams come true with our unique bespoke furniture services. Ours is the commitment to timeless, distinguished furnishings that make every day elegant. Since standard inception we've held to an ideal of comfort and refinement in every piece put forth by our family of brands.

MAAK Furniture Industries Pvt. Ltd. Greater Noida based furniture manufacturing organization focusing on the future endeavors. We are making ergonomically designed seating solutions more accessible and mainstream and as of now, we have a successful track record in manufacturing quality and aesthetically pleasing office furniture.

Our designs range from traditional to contemporary and as we use vast range of suppliers we can offer a solution to fit any space in your office premises. All of our solutions are fitted with soft closing systems to offer extra durability to your furniture. We provide office chairs and modular furniture which focuses on providing the best of comfort. Our specialty stays in Ergonomic furniture which describes products that have been designed with comfort, functionality and the movement of the human body in mind. This type of furniture is becoming more popular in modern office design schemes and is recommended considering the product does not restrict but further, enhance natural movement and flow of the human body. Our product supports natural posture and is easily adjusted to accommodate a diverse range of people and above everything else, it helps to reduce the stress of joints, bones and muscles.

MAAK Furniture Industries Pvt. Ltd. has in its portfolio a wide variety of Modular Workstations, Office Table, Conference Tables, Wooden Storage Units, Medical Beds and Computer Tables and presented to you in various color combinations and sizes to fit all kinds of space requirements of our customers. We have the latest machinery, advanced technology and we use the best material.

PASSION:

We dare to dream, we always aim higher. By constantly setting new standards in who we are and what we do, our passion will spur us on.

PARTNERSHIP:

We work as a team with mutual trust and shared accountability towards a common goal in a collaborative environment, to meet the needs and expectations of all stakeholders. We always stand behind our promises and act with complete integrity.

INNOVATION:

We are constantly seeking to exceed our previous best, with creativity and imagination. By challenging the way we see and to things, it leads to fresh perspectives and new ideas that inspire business innovation drive sustainable efficiencies and deliver superior product offerings.

It is our belief that when you purchase a piece of furniture you are creating an experience, a memory. And it is these experiences we strive to create for our valuable customers. We have received immense love from them and we strive to bring them new experiences every day.

Certificates



UKert
Certification & Inspection

Certificate of Compliance
This is to certify that:

MAAK FURNITURE INDUSTRIES PVT. LTD.
J-136, SITE 5 KASNA INDUSTRIAL AREA, GREATER NOIDA, GAUTAM BUDDHA NAGAR, U.P.-201309, INDIA

GREENGUARD COMPLIANCE
For low emitting products and materials under the standards of the institute for the following scope:

High Back Chairs, Mid Back Chairs, Visitor Chairs, Café Chairs, Sofas, Executive Tables Set, Officers Tables, Tables, Modular Furniture, Modular Partition Systems, Computer Tables, Workstations, Cupboards, Steel Almirah, Library Tables, Library Chairs, Library Tables, Laboratory Tables, Laboratory Chairs & Stools, Cafeteria Tables, Revolving Chairs, Lobby Chairs, Lounge Chairs, Medical Beds & Medical Tables, Auditorium Chair, Wooden Wardrobe, Steel Filing Cabinet, Metal Storage, Wooden Storage

We hereby confirm that the technical file for above mentioned furniture as produced is in compliance with the essential requirements, in case of alteration of the raw materials used for manufacturing of Furniture, not agreed upon by us, the certification will lose its validity. The statement is based on a random evaluation of samples of above mentioned materials. The Compliance Certificate issued as per given documents & information by the Organisation.

Certificate No: TQ-2021080687
Validity of this certificate can be verified at www.certifications.com/ukert/

Date of Certification	06 th August 2021
1 st Surveillance Audit Due	05 th August 2022
2 nd Surveillance Audit Due	05 th August 2023
Certificate Expiry subject to the company maintaining its system to the required standard	05 th August 2024

Daniel..
Authorised Signatory

UKert
Certification & Inspection

Verification of Compliance of BIFMA

MAAK FURNITURE INDUSTRIES PVT. LTD.
Address: J-136, SITE 5 KASNA INDUSTRIAL AREA, GREATER NOIDA, GAUTAM BUDDHA NAGAR, U.P.-201309, INDIA

Product
High Back Chairs, Mid Back Chairs, Visitor Chairs, Café Chairs, Sofas, Executive Tables Set, Officers Tables, Tables, Modular Furniture, Modular Partition Systems, Computer Tables, Workstations, Cupboards, Steel Almirah, Library Tables, Library Chairs, Library Tables, Laboratory Tables, Laboratory Chairs & Stools, Cafeteria Tables, Revolving Chairs, Lobby Chairs, Lounge Chairs, Medical Beds & Medical Tables, Auditorium Chair, Wooden Wardrobe, Steel Filing Cabinet, Metal Storage, Wooden Storage

Has been independently assessed and found as meeting the requirements of Compliance of sustainability standard as per

BIFMA LEVEL 2

This certificate is issued under the following conditions:

- It applies only to the quality system maintained by the manufacturer of above referenced models and it does not substitute the design or type/certification procedures, if any.
- The certificate remains valid until the manufacturing conditions or the quality systems are not changed.
- The certificate validity is conditioned by positive results of surveillance audits.
- The statement is based on a sample evaluation of one sample of above mentioned product. It does not imply an assessment of the whole production.

Certificate No: TQ-2021080688
Validity of this certificate can be verified at www.certifications.com/ukert/

Date of Certification	06 th August 2021
1 st Surveillance Audit Due	05 th August 2022
2 nd Surveillance Audit Due	05 th August 2023
Certificate Expiry subject to the company maintaining its system to the required standard	05 th August 2024

Daniel..
Authorised Signatory

QRO
QUALITY RESEARCH ORGANIZATION

Certificate of Registration
This is to certify that:

MAAK FURNITURE INDUSTRIES PVT. LTD.
J-136, SITE 5 KASNA INDUSTRIAL AREA, GREATER NOIDA, GAUTAM BUDDHA NAGAR, U.P.-201309, INDIA

has been independently assessed by QRO and is compliant with the requirement of:

ISO 9001:2015
Quality Management System

For the following scope of activities:

High Back Chairs, Mid Back Chairs, Visitor Chairs, Café Chairs, Sofas, Executive Tables Set, Officers Tables, Tables, Modular Furniture, Modular Partition Systems, Computer Tables, Workstations, Cupboards, Steel Almirah, Library Tables, Library Chairs, Library Tables, Laboratory Tables, Laboratory Chairs & Stools, Cafeteria Tables, Revolving Chairs, Lobby Chairs, Lounge Chairs, Medical Beds & Medical Tables, Auditorium Chair, Wooden Wardrobe, Steel Filing Cabinet, Metal Storage, Wooden Storage

Date of Certification: 4 th August 2021	2 nd Surveillance Audit Due: 3 rd August 2023
1 st Surveillance Audit Due: 3 rd August 2022	Certificate Expiry: 3 rd August 2024

Certificate Number: 305021080409Q

Daniel..
Head of Certification

QRO
QUALITY RESEARCH ORGANIZATION

Certificate of Registration
This is to certify that:

MAAK FURNITURE INDUSTRIES PVT. LTD.
J-136, SITE 5 KASNA INDUSTRIAL AREA, GREATER NOIDA, GAUTAM BUDDHA NAGAR, U.P.-201309, INDIA

has been independently assessed by QRO and is compliant with the requirement of:

ISO 14001:2015
Environmental Management System

For the following scope of activities:

High Back Chairs, Mid Back Chairs, Visitor Chairs, Café Chairs, Sofas, Executive Tables Set, Officers Tables, Tables, Modular Furniture, Modular Partition Systems, Computer Tables, Workstations, Cupboards, Steel Almirah, Library Tables, Library Chairs, Library Tables, Laboratory Tables, Laboratory Chairs & Stools, Cafeteria Tables, Revolving Chairs, Lobby Chairs, Lounge Chairs, Medical Beds & Medical Tables, Auditorium Chair, Wooden Wardrobe, Steel Filing Cabinet, Metal Storage, Wooden Storage

Date of Certification: 4 th August 2021	2 nd Surveillance Audit Due: 3 rd August 2023
1 st Surveillance Audit Due: 3 rd August 2022	Certificate Expiry: 3 rd August 2024

Certificate Number: 305021080410E

Daniel..
Head of Certification

QRO
QUALITY RESEARCH ORGANIZATION

Certificate of Registration
This is to certify that:

MAAK FURNITURE INDUSTRIES PVT. LTD.
J-136, SITE 5 KASNA INDUSTRIAL AREA, GREATER NOIDA, GAUTAM BUDDHA NAGAR, U.P.-201309, INDIA

has been independently assessed by QRO and is compliant with the requirement of:

ISO 45001:2018
Occupational Health and Safety Management System

For the following scope of activities:

High Back Chairs, Mid Back Chairs, Visitor Chairs, Café Chairs, Sofas, Executive Tables Set, Officers Tables, Tables, Modular Furniture, Modular Partition Systems, Computer Tables, Workstations, Cupboards, Steel Almirah, Library Tables, Library Chairs, Library Tables, Laboratory Tables, Laboratory Chairs & Stools, Cafeteria Tables, Revolving Chairs, Lobby Chairs, Lounge Chairs, Medical Beds & Medical Tables, Auditorium Chair, Wooden Wardrobe, Steel Filing Cabinet, Metal Storage, Wooden Storage

Date of Certification: 4 th August 2021	2 nd Surveillance Audit Due: 3 rd August 2023
1 st Surveillance Audit Due: 3 rd August 2022	Certificate Expiry: 3 rd August 2024

Certificate Number: 305021080411HS

Daniel..
Head of Certification

MAAK
FURNITURE

The Complete Comfort



Index



The Complete Comfort

President Series	1-6
CEO Series	7-10
Director Series	11-14
Managerial Series	15-16
Mesh Series	17-21
Visitor Series	22-23
Computer Series	24
Institutional Series	25-28
Dining Series	29
Café Series	30-33
Center Table Series	34
Sofa Series	35-42
Waiting Series	43-44
Bed Series	45
Auditorium Series	46
Workstation Series	47-50
President Table Series	51-54
Director Table Series	55
Classic Table Series	56
Computer Series	57-59
Conference Series	60-62
Reception Series	63-64
Laboratory Series	65
Compactor Series	66
Storage Series	67
Pedestal Series	68
Metal Storage Series	69-70
Laminate Colour	71
Note	72







MF - 101



MF - 102



MF - 103



MF - 104



MF - 105



MF - 106



MF - 107



MF - 108



MF - 109

President Series



MF - 110



MF - 111



MF - 112



MF - 113



MF - 114



MF - 115



MF - 116



MF - 117



MF - 118



MF - 119



MF - 120



MF - 121



MF - 122



MF - 123



MF - 124



MF - 125



MF - 126



MF - 127



MF - 128



MF - 129



MF - 130



MF - 131



MF - 132



MF - 133







MF - 201



MF - 202



MF - 203



MF - 204



MF - 205



MF - 206



MF - 207



MF - 208



MF - 209



MF - 210



MF - 211



MF - 212



MF - 213



MF - 214



MF - 215



MF - 216



MF - 217



MF - 218



MF - 219



MF - 220



MF - 221



MF - 222







MF - 301



MF - 302



MF - 303



MF - 304



MF - 305



MF - 306



MF - 307



MF - 308



MF - 309

Director Series



MF - 310



MF - 311



MF - 312



MF - 313



MF - 314



MF - 315



MF - 316



MF - 317



MF - 318



MF - 319



MF - 320





MF - 321



MF - 322



MF - 323



MF - 324



MF - 325



MF - 326



MF - 327



MF - 328



MF - 329



MF - 330



MF - 331



MF - 332

Director Series



MF - 333



MF - 334



MF - 335



MF - 336



MF - 337



MF - 338



MF - 339





MF - 401



MF - 402



MF - 403



MF - 404



MF - 405



MF - 406



MF - 407



MF - 408



MF - 409



MF - 410



MF - 411



MF - 412



MF - 413



MF - 414



MF - 415



MF - 416



MF - 417



MF - 418



MF - 419



MF - 501



MF - 502



MF - 503



MF - 504



MF - 505



MF - 506



MF - 507



MF - 508



MF - 509



MF - 510



MF - 511



MF - 512

Mesh Series



MF - 513



MF - 514



MF - 515



MF - 516



MF - 517



MF - 518



MF - 519



MF - 520



MF - 521



MF - 522



MF - 523



MF - 524



MF - 525



MF - 526



MF - 527



MF - 528



MF - 529



MF - 530



MF - 531



MF - 532



MF - 533



MF - 534



MF - 535



MF - 536

Mesh Series



MF - 537



MF - 538



MF - 539



MF - 540



MF - 541



MF - 542



MF - 543



MF - 544



MF - 545



MF - 546



MF - 547



MF - 548



MF - 549



MF - 550



MF - 551



MF - 552



MF - 553



MF - 554



MF - 555



MF - 556



MF - 557



Visitor Series



MF - 601



MF - 602



MF - 603



MF - 604



MF - 605



MF - 606



MF - 607



MF - 608



MF - 609



MF - 610



MF - 611



MF - 612



MF - 613



MF - 614



MF - 615



MF - 616



Computer Series



MF - 701



MF - 702



MF - 703



MF - 704



MF - 705



MF - 706



MF - 707



MF - 708



MF - 709



Institutional Series



MF - 801



MF - 802



MF - 803



MF - 804



MF - 805



MF - 806



MF - 807



MF - 808



MF - 809



MF - 810



MF - 811



MF - 812

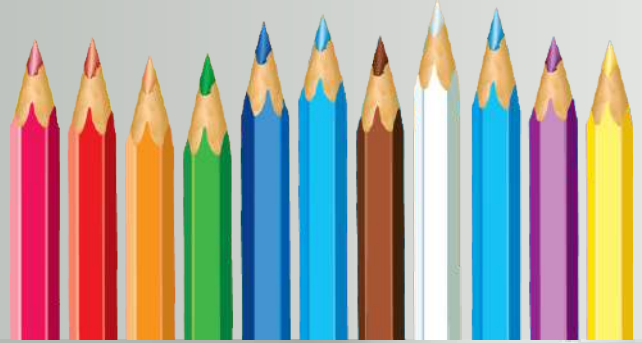
Institutional Series



MF - 813



MF - 814





MF - 901



MF - 902



MF - 903



MF - 904



MF - 905



MF - 906



MF - 907



MF - 908





MF - 1001



MF - 1002



MF - 1003



MF - 1004



MF - 1005



MF - 1006



MF - 1007



MF - 1008



MF - 1009



MF - 1010



MF - 1011



MF - 1012



MF - 1013



MF - 1014



MF - 1015

Café Series



MF - 1101



MF - 1102



MF - 1103



MF - 1104



MF - 1105



MF - 1106



MF - 1107



MF - 1108



MF - 1109



MF - 1110



MF - 1111



MF - 1112



MF - 1113



MF - 1114



MF - 1115



MF - 1116



MF - 1117



MF - 1118



MF - 1119



MF - 1120



MF - 1121



MF - 1122



MF - 1123



MF - 1124



MF - 1125



MF - 1126



MF - 1127



MF - 1128





MF - 1129



MF - 1130



MF - 1131



MF - 1132



MF - 1133



MF - 1134



MF - 1135



MF - 1136



MF - 1137



CAFÉ - 1



CAFÉ - 2



CAFÉ - 3



CAFÉ - 4



CAFÉ - 5



CAFÉ - 6



Café
Series

Center Table Series



RAPIDO



ULTRA



RAINBOW



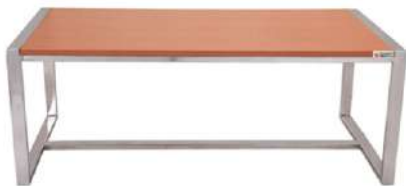
ALPHA



SKODA



BRAVO



MARY



DELTA



TORZAN



SUPRA-1



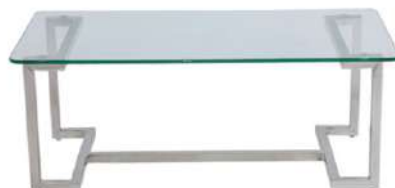
SUPRA-2



CISCA



CHARLY



BRAT



OVAL



Sofa Series



ROYCE



BENTLEY





ROLEX



CRYSTA



HEXA



RADO



DUBLIN



KELVIN



ELITE



ALLEN



LEXA



VENIS



SPICE



STAR



MORRISON



ZARA



AGUSTA



ACURA



XYLO



WISDOM





LOUNGE



VISTA



NEXA-IV



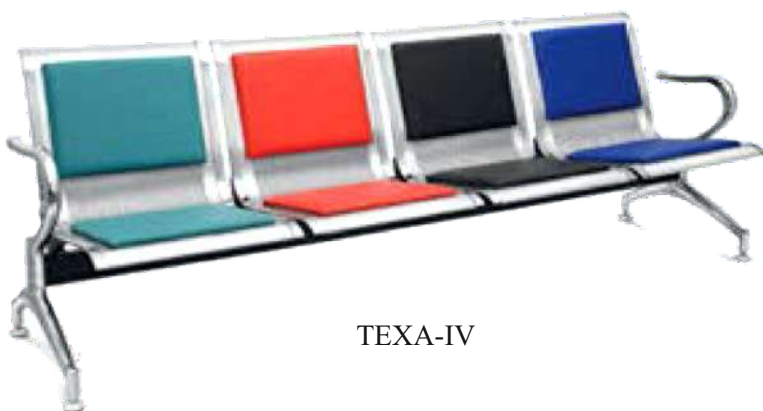
NEXA-III



LIVO-IV



TEXA-III



TEXA-IV



ZEN



UNIQ



CLASSIC

Waiting Series



HOSTLE-1



HOSTLE-2



HOSTLE-3



HOSTLE-4



Auditorium Series



AUDI-1



AUDI-2



AUDI-3



AUDI-4



AUDI-5



AUDI-6



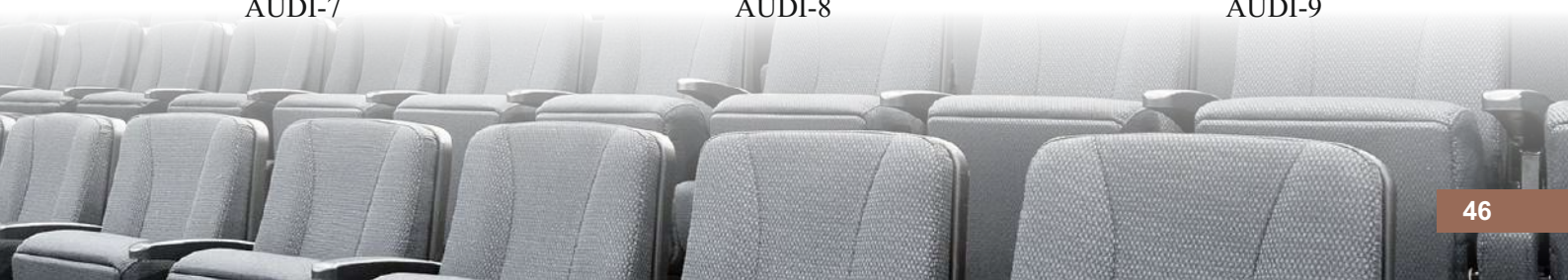
AUDI-7



AUDI-8



AUDI-9





Workstation Series



ARENA-1
W 3180 x D 1620 x H 1600mm



ARENA-2
W 3000 x D 3000 x H 1050mm



ARENA-3
W 3660 x D 3660 x H 1200mm



ARENA-4
W 3060 x D 1860 x H 1200mm



ARENA-5
W 2400 x D 1260 x H 1200mm



ARENA-6
W 2520 x D 1260 x H 1200mm



ARENA-7
W 2400 x D 1260 x H 1200mm



ARENA-8
W 1100 x D 1100 x H 1050mm



ARENA-9
W 1320 x D 660 x H 1200mm



ARENA-10
W 2580 x D 660 x H 1200mm



ARENA-11
W 1200 x D 1200 x H 1050mm



ARENA-12
W 2520 x D 1260 x H 1200mm



ARENA-13
W 2000 x D 1260 x H 1200mm



ARENA-14
W 4000 x D 1260 x H 1200mm



ARENA-15
W 1560 x D 1560 x H 1200mm



ARENA-16
W 2400 x D 1200 x H 1050mm



ARENA-17
W 2500 x D 1260 x H 1200mm



ARENA-18
W 2400 x D 1200 x H 1050mm



President Series



PREMIUM-1

L 2400 x D 2400 x H 750mm

L 2100 x D 2100 x H 750mm

L 1800 x D 1800 x H 750mm



PREMIUM-2

L 2400 x D 2400 x H 750mm

L 2100 x D 2400 x H 750mm



PREMIUM-3
L 2250 x D 2400 x H 750mm
L 2000 x D 2100 x H 750mm
L 1800 x D 2000 x H 750mm



PREMIUM-4
L 2400 x D 2250 x H 750mm
L 2100 x D 2100 x H 750mm
L 1800 x D 1800 x H 750mm



PREMIUM-5
L 2100 x D 1950 x H 750mm
L 1800 x D 1800 x H 750mm



PREMIUM-6
L 1800 x D 1800 x H 750mm
L 1650 x D 1800 x H 750mm



PREMIUM-6
L 1800 x D 1800 x H 750mm
L 1650 x D 1650 x H 750mm



PREMIUM-8
L 2100 x D 1950 x H 750mm
L 1800 x D 1800 x H 750mm
L 1650 x D 1800 x H 750mm



PREMIUM-9
L 2250 x D 2100 x H 750mm
L 2100 x D 2100 x H 750mm
L 1800 x D 1800 x H 750mm



PREMIUM-10
L 1800 x D 1800 x H 750mm
L 1650 x D 1650 x H 750mm
L 1500 x D 1650 x H 750mm



PREMIUM-11
L 1800 x D 1800 x H 750mm
L 1650 x D 1650 x H 750mm
L 1500 x D 1650 x H 750mm



PREMIUM-12
L 2200 x D 1950 x H 750mm
L 2000 x D 1850 x H 750mm
L 1800 x D 1750 x H 750mm



PREMIUM-13
L 2800 x D 2200 x H 750mm
L 2600 x D 2100 x H 750mm



PLATINUM-1
L 1800 x D 1800 x H 750mm
L 1650 x D 1650 x H 750mm
L 1500 x D 1650 x H 750mm



PLATINUM-2
L 1800 x D 1800 x H 750mm
L 1650 x D 1650 x H 750mm
L 1500 x D 1650 x H 750mm



PLATINUM-3
L 1800 x D 1800 x H 750mm
L 1650 x D 1650 x H 750mm
L 1500 x D 1650 x H 750mm



PLATINUM-4
L 2000 x D 1800 x H 750mm
L 1800 x D 1650 x H 750mm
L 1600 x D 1600 x H 750mm



PLATINUM-5
L 1950 x D 2000 x H 750mm
L 1800 x D 2000 x H 750mm
L 1650 x D 1900 x H 750mm



PLATINUM-6
L 1800 x D 1800 x H 750mm
L 1650 x D 1650 x H 750mm
L 1500 x D 1650 x H 750mm



CLASSIC-1
L 1500 x D 750 x H 750mm
L 1350 x D 600 x H 750mm
L 1200 x D 600 x H 750mm



CLASSIC-2
L 1500 x D 750 x H 750mm
L 1350 x D 600 x H 750mm
L 1200 x D 600 x H 750mm



CLASSIC-3
L 1800 x D 1800 x H 750mm
L 1650 x D 1650 x H 750mm
L 1500 x D 1650 x H 750mm



CLASSIC-4
L 1800 x D 1800 x H 750mm
L 1650 x D 1650 x H 750mm
L 1500 x D 1650 x H 750mm



CLASSIC-5
L 1950 x D 1800 x H 750mm
L 1800 x D 1800 x H 750mm
L 1650 x D 1800 x H 750mm





COMPUTER-1
L 1500 x D 750 x H 750mm
L 1200 x D 600 x H 750mm



COMPUTER-2
L 1500 x D 750 x H 750mm
L 1200 x D 600 x H 750mm



COMPUTER-3
L 1500 x D 750 x H 750mm
L 1200 x D 600 x H 750mm



COMPUTER-4
L 1500 x D 750 x H 750mm
L 1300 x D 750 x H 750mm
L 1200 x D 600 x H 750mm



COMPUTER-3
L 1500 x D 750 x H 750mm
L 1200 x D 600 x H 750mm



COMPUTER-4
L 1500 x D 750 x H 750mm
L 1200 x D 600 x H 750mm



COMPUTER-7
L 1500 x D 750 x H 750mm
L 1200 x D 600 x H 750mm



COMPUTER-8
L 1200 x D 600 x H 750mm





CONF T-1
L 5400 x D 1500 x H 750mm
L 4800 x D 1200 x H 750mm
L 4500 x D 1200 x H 750mm
L 3600 x D 1200 x H 750mm



CONF T-2
L 3600 x D 1200 x H 750mm
L 2400 x D 1200 x H 750mm
L 2100 x D 900 x H 750mm



CONF T-3
L 5400 x D 1800 x H 750mm
L 4500 x D 1800 x H 750mm
L 3600 x D 1800 x H 750mm



CONF T-4
L 6000 x D 1800 x H 750mm
L 4500 x D 1500 x H 750mm
L 3600 x D 1200 x H 750mm



CONF T-5
L 3600 x D 1200 x H 750mm
L 3000 x D 1200 x H 750mm
L 2400 x D 1200 x H 750mm



CONF T-6
L 3600 x D 1200 x H 750mm
L 3000 x D 1200 x H 750mm
L 2400 x D 1200 x H 750mm



CONF T-7
L 5400 x D 2400 x H 750mm
L 4200 x D 2400 x H 750mm



CONF T-6
L 6000 x D 3000 x H 750mm
L 4500 x D 3000 x H 750mm

Conference Series



CONF T-9
Dia 1200 x H 750mm
Dia 900 x H 750mm



CONF T-10
L 3600 x D 1200 x H 750mm
L 3000 x D 1200 x H 750mm
L 2400 x D 1200 x H 750mm



CONF T-11
L 2400 x D 1800 x H 750mm



CONF T-12
L 5400 x D 1500 x H 750mm
L 4500 x D 1200 x H 750mm
L 3600 x D 1200 x H 750mm



CONF T-13
L 4800 x D 1200 x H 750mm
L 3600 x D 1200 x H 750mm
L 2400 x D 1200 x H 750mm





RECEPTION Series



RECPT-1
L 2100 x D 900 x H 1050mm
L 1800 x D 750 x H 1050mm
L 1500 x D 750 x H 1050mm



RECPT-2
L 1800 x D 750 x H 1050mm
L 1500 x D 600 x H 1050mm
L 1200 x D 600 x H 1050mm



RECPT-3
L 2100 x D 900 x H 1050mm
L 1800 x D 750 x H 1050mm
L 1500 x D 750 x H 1050mm



RECPT-4
L 1800 x D 750 x H 1050mm
L 1500 x D 600 x H 1050mm
L 1200 x D 600 x H 1050mm



RECPT-5
L 2100 x D 900 x H 1050mm
L 1800 x D 750 x H 1050mm
L 1500 x D 750 x H 1050mm



RECPT-6
L 1500 x D 600 x H 1050mm



LAB-1
(With Island Unit)
W 2500 x D 1500 x H 900mm



LAB-1
(Wall Side Unit)
W 2500 x D 750 x H 900mm



Drive Type Compactor
COMPACTOR-1



Push Pull Type Compactor
COMPACTOR-1

COMPACTOR Series



STORAGE-1
W 1800 x D 400 x H 2000mm



STORAGE-2
W 900 x D 450 x H 2100mm
W 900 x D 450 x H 1950mm
W 900 x D 450 x H 1800mm



STORAGE-3
W 1200 x D 450 x H 2100mm
W 1200 x D 450 x H 1950mm
W 1200 x D 450 x H 1800mm



STORAGE-4
W 900 x D 450 x H 2100mm
W 900 x D 450 x H 1950mm
W 900 x D 450 x H 1800mm



STORAGE-5
W 1600 x D 450 x H 750mm



STORAGE-6
W 900 x D 450 x H 2100mm
W 900 x D 450 x H 1950mm
W 900 x D 450 x H 1800mm



STORAGE-7
W 900 x D 450 x H 750mm



STORAGE-8
W 900 x D 400 x H 750mm



STORAGE-9
W 900 x D 450 x H 1200mm

Pedestal Series



STORAGE-10
W 1800 x D 450 x H 900mm



STORAGE-11
W 1800 x D 450 x H 750mm



STORAGE-12
W 1800 x D 450 x H 750mm



STORAGE-13
W 1800 x D 450 x H 750mm



PEDESTAL-1
W 400 x D 450 x H 680mm



PEDESTAL-2
W 400 x D 450 x H 680mm



PEDESTAL-3
W 400 x D 450 x H 680mm



PEDESTAL-4
W 400 x D 450 x H 600mm



PEDESTAL-5
W 400 x D 450 x H 630mm



PEDESTAL-6
W 400 x D 450 x H 630mm



PEDESTAL-7
W 400 x D 450 x H 630mm



PEDESTAL-8
W 400 x D 450 x H 630mm



ALMIRAH-1
W 915 x D 485 x H 1980mm



ALMIRAH-2
W 915 x D 485 x H 1980mm



ALMIRAH-3
W 915 x D 485 x H 1980mm



ALMIRAH-4
W 915 x D 485 x H 1350mm
W 915 x D 485 x H 1200mm



METAL STORAGE-1
W 900 x D 450 x H 930mm



METAL STORAGE-2
W 900 x D 450 x H 750mm



FILING CABINET-1
W 900 x D 450 x H 900mm



FILING CABINET-2
W 450 x D 650 x H 750mm
W 450 x D 650 x H 1050mm
W 450 x D 650 x H 1350mm



METAL PEDESTAL-1
W 400 x D 450 x H 600mm



METAL PEDESTAL-2
W 400 x D 450 x H 600mm



METAL RACK-1
W 915 x D 300 x H 1800mm



METAL RACK-2
W 915 x D 600 x H 2110mm



METAL RACK-3
W 915 x D 450 x H 1850mm

METAL RACK-4
W 915 x D 485 x H 1980mm

METAL RACK-5
W 900 x D 300 x H 1800mm
W 900 x D 450 x H 1800mm
W 900 x D 600 x H 1800mm

METAL RACK-6
W 900 x D 300 x H 1800mm
W 900 x D 450 x H 1800mm
W 900 x D 600 x H 1800mm



BOOKCASE
W 915 x D 350 x H 1750mm

LOCKER-1
W 1520 x D 450 x H 1800mm

LOCKER-2
W 900 x D 475 x H 1950mm

FILING CABINET-3
W 450 x D 650 x H 1200mm



PERSONAL LOCKER-1
W 380 x D 450 x H 1800mm

PERSONAL LOCKER-2
W 380 x D 450 x H 1800mm





10002 Mangfall Beech



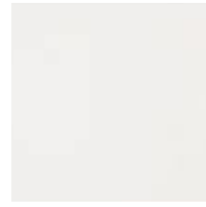
10175 Asian Mapple



11005 Neo Highland Pine



10091 Nova Teak



22091 Arctic White



21059 Platinum



10858 Wenge



10012 Oxford Cherry



10699 Mahogany



22099 Slate



10145 Red Oxford Cherry



10007 Douglas Pine



10036 White Beech



11192 Neo Bavarian Beech



10544 Candian Walnut



10031 Fine Oak



10848 Straight Walnut DX



10019 Sapelle

*(For DX shade rate will be charged extra).

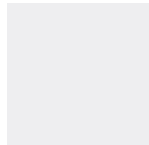
Powder Coats



Black



Ivory



White



Chocolate Brown



Moon Grey



Silver Grey



Bone Grey



D.A. Grey

Fabrics



Med Blue (F191)



Acorn (F128)



Caramel (F132)



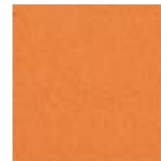
China Sea (F407)



Roman Green (F440)



Lavender (F416)



Dago Orange (F181)



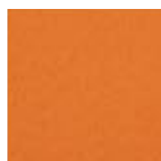
Spearment (F102)



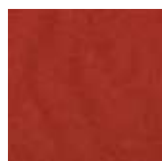
Flame (F123)



Attenzion (MS 419)



Fresco (MS 420)



Cinnamon (MS 422)



Cream Blue (MF 801)



Cement Yellow (MF 817)



Beige Blue (MF 803)



Salmom (MS 425)



Reflection (MS 438)



Vesuvius (MS 410)



Gold Blue (MF 821)



Wine Blue (MF 822)



Blue (MF 824)



Granada (MS 452)



Mink (MS 449)



Dark Forest (MS 437)

MAAK

FURNITURE

The Complete Comfort



J-136, Site-V, Industrial Area, Kasna
Greater Noida, Gautam Buddha Nagar,
Uttar Pradesh, (U.P.) - 201308
Website : www.maakindustries.com
E-mail : sales@maakindustries.com
Mobile : +91 8470990127, 7068990127

Authorised Dealer

